



Award Winning Catalogue

Award Winning Range 2003/4



Designed for living
2003/4

Award *Winning Design*

Award: 1. to grant as merit.
2. award prizes to the winners.

- *Odyssey Suite*
- *Solar Flare Fire*
- *Odyssey Fire*
- *Voyager Stove*
- *Europa Suite*
- *Pioneer Stove*

We are committed to providing the independent retailer with the most innovative range of electric fires and suites.

Strict quality control procedures are adhered to at all stages of manufacturing and ongoing design development ensures that our product range meets both existing and emerging market demands.

Designed for living

2003/4



Contents

Award Winning Range 2003/4

- | | |
|--|--|
| 3. Europa Suite | 14. Neptune Fires
Apollo Fires |
| 4. Neptune Suite | 15. Trinity Fire
Berkeley Fire |
| 5. Odyssey Suite | 16. Stanford Fire
Harvard Fire
Utah Fire |
| 6. Callisto Suite | 17. Atlanta Fire
Brabazon Fire
Muirfield Fire |
| 7. Vega Suite | 18. Woburn Suite
Turnberry Suite
Wentworth Suite |
| 8. Apollo Suite | 19. Dimensions, options and
functions. |
| 9. Elara Suite | |
| 10. Voyager Stove | |
| 11. Pioneer Stove | |
| 12. Manhattan Suite
Princeton Suite | |
| 13. Mariner Fire
Magellan Fire | |

innovation
unique
Europa

Suite **Europa** with
Solar Flare
Electric Fire

Unique: 1. being the only one of
a particular type. 2. without
equal or like. 3. *informal.*
remarkable.



Option
Award Winning
Solar Flare fire
available without surround
(fire only)



The Europa Suite strikes the perfect partnership between contemporary and traditional design. Easy to install and with no recess or inset required, the free standing Europa Suite can be used as a focal point for any room. Two colours of a natural stone effect give definition to the fireplaces shape and allow it to blend in perfectly with the any colour scheme. *Combining innovation and our knowledge to create a piece that is uniquely Award Winning.*

Multifunction remote control • Child friendly master on/off switch
Hidden heater technology, 1 & 2kw • Ease of access for bulb change
New remote dimmable "Sun Blaze" flame chamber • Curved Flame-a-Vision flame effect
Choice of fuel effects, either pebbles or authentic Canadian driftwood
Dimensions on page 19.

Neptune

Suite

interior
tranquillity
Neptune

Tranquillity: 1. a state of calmness or peacefulness.

Five Option
Flame-a-Vision colours
~~silver~~
black
pebbles or marbles

Flame-a-Vision colours:
White, Orange, Blue, Green & Yellow.



Flame-a-Vision, white

Remote and manual on/off • Choice of five curved Flame-a-Vision colour effects
High-level switches • Thermostatically controlled 2kw heater concealed in canopy
Choice fuel effects either marbles or pebbles • Choice of fire colour, Brushed
Stainless finish or Matt Black (see page 14.)
Dimensions on page 19.

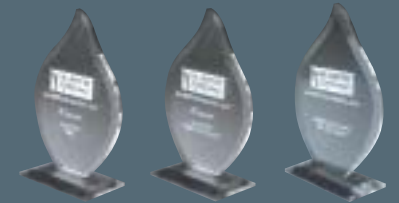
The Neptune Suite, with its gently curved, raised hearth is available with either the Black or Silver fire option. With a simple bulb change, a choice of Flame-a-Vision effect colours can be incorporated, offering the potential to co-ordinate the fire with an *interior design theme*, for your homes tranquillity.

decoration
style *Odyssey*

Odyssey

Suite

style: 1. a form of appearance design or production; type or make. 2. the way in which something is done: modern style interiors.



Odyssey fire option
available with display cabinet
& fire only



The Odyssey Suite incorporates an award winning, remote control pebble effect fire, set around a stylish cylindrical Flame-a-Vision column. A hinged door enables ease of access for bulb changes. The fire is set into a contemporary raised surround with sloping pilasters. The optional cabinet with integral lighting provides a *stylish solution for display, for your personal decoration.*

2kw heater • Thermostatically controlled settings • Remote on/off control
Flame-a-Vision effect dimmer • Easy access to fuel effect and for bulb change
Award winning hidden heat source - no visible grille or louvre 2002
Cabinet option available • Fire only option available
Dimensions on page 19.

Callisto

Suite

elegance: 1. tasteful, style, or design. 2. dignified and graceful. 3. cleverly simple.

Five Option

Flame-a-Vision colours:
White, Orange, Blue, Green & Yellow.



decor
elegance
Callisto

Remote and manual on/off • Choice of five curved Flame-a-Vision colour effects
High-level switches • Thermostatically controlled 2kw heater concealed in canopy
Choice fuel effects either marbles or pebbles • Suite cabinet option
Dimensions on page 19.

Introducing the elegant Callisto Suite, the fireplace with flare. Finished in natural stone effect the Callisto blends perfectly with the unique shape of the Magellan fire. The optional cabinet with integrated lighting provides an elegant solution for display and decor.



design
lifestyle *Vega*

Suite **Vega** with
Isis Electric Fire

Lifestyle: 1. a set of attitudes, habits, and possessions regarded as fashionable and desirable or associated with a particular person or group.

lifestyle

Option
Isis fire option
available without surround
pebbles
driftwood



With its continental inspired shape and natural stone effect finish, the Vega Suite is an enlightened solution to classical styling with a contemporary look. Easy to install with no inset required and using our Isis hole in the wall allows the suite all the advantages this state of the art fire has to offer and providing a design to fit your lifestyle.

- Multifunction remote control
 - Child friendly master on/off switch
 - Hidden heater technology, 1 & 2kw
 - Ease of access for bulb change
 - New remote dimmable "Sun Blaze" flame chamber
 - Curved Flame-a-Vision flame effect
 - Choice of fuel effects, either pebbles or authentic Canadian driftwood
- Dimensions on page 19.

Patents Applied for. Designs registered 3009214 & 3006217

Apollo Suite

charm: 1. the quality of attracting, fascinating, or delighting people.

Five *Option*
Flame-a-Vision colours
silver
black

Flame-a-Vision colours:
White, Orange, Blue, Green & Yellow.



taste
charm
Apollo

Manual on/off • Choice of five Flame-a-Vision colour effects
High-level switches • Thermostatically controlled 2kw heater concealed in canopy
Choice of fires from Apollo range (see page 14.)
Dimensions on page 19

The Apollo Suite, incorporating an internally illuminated display shelf and finished in a Stone effect provides a stylish surround for the Apollo fire. The suite is available with any fire from the Apollo range offering a *charming solution to your needs and taste.*

classic
contemporary
Elara

Suite Elara

contemporary: 1. living or occurring in the same time period. 2. modern in style or fashion. 3. existing or occurring at the present time.

contemporary

Option
available without surround
pebbles
marbles

Flame-a-Vision colours:
White, Orange, Blue, Green & Red.



Quite simply beautiful, the Elara Suite uses a rear lit frosted translucent back panel to pick up and soften the colour of any room. A uniquely styled solid Maple surround with the Mariner fire compliment each other by combining classic designs for contemporary living.

Remote and manual on/off • Choice of five curved Flame-a-Vision colour effects
High-level switches • Thermostatically controlled 2kw heater concealed in canopy
Choice fuel effects either marbles or pebbles • Mariner (fire only) available page 8
Dimensions on page 19

Voyager

Stove

spectacle: 1. a strange or interesting scene. 2. an impressive, grand, dramatic public show.



Option
pebbles
driftwood



Ideas

Ideal for use anywhere around the home.

Multifunction remote control • Child friendly master on/off switch
Hidden heater technology, 1 & 2kw • Ease of access for bulb change through
handless door • Remote dimmable curved Flame-a-Vision flame effect
Choice of fuel effects, either pebbles or authentic Canadian driftwood
Dimensions on page 19.



fresh
spectacle

Free standing and with no inset required, the Voyager Stove offers the beauty of modern living in a contemporary form with a choice of fuel effects either pebbles or authentic Canadian driftwood. Inspiration coming from the heart of Europe and with no visible heat source this continental design offers a *fresh idea for any room and a unique spectacle.*

rooms
modern
Pioneer

Stove Pioneer

modern: 1. of the present or a recent time; contemporary. 2. a contemporary person.



Option
pebbles
driftwood



Ideas

Ideal for use anywhere around the home.



Patents Applied for: Designs registered 3009214 & 3006217

Similar to the Voyager, the Pioneer Stove features the same central European influences but in a more compact form. Also available with a choice of fuel effects and with no visible heat source the Pioneer is *a design for any room, to suit modern life.*

Multifunction remote control • Child friendly master on/off switch
Hidden heater technology, 1 & 2kw • Ease of access for bulb change through
handleless door • Remote dimmable curved Flame-a-Vision flame effect
Choice of fuel effects, either pebbles or authentic Canadian driftwood
Dimensions on page 19.

Manhattan & Princeton Suites

beauty: 1. a combination of all qualities or something that delights the senses and mind.
2. an outstanding example.

excellence
beauty
Princeton
Manhattan



(1)



(2)

2Kw heater • Two heat setting • Concealed switches • Flame-a-Vision effect with realistic log pieces • Stone effect mantle with raised hearth and inset fire
Princeton (1): Traditional angular design • Manhattan (2): Beautifully curved design
Dimensions on page 19.

The Manhattan and the Princeton are simplistic, but show characters of sophistication. With their stone effect mantles and raised fires, they make an excellent centre piece for any room, and look simply beautiful.

inspiration
comfort
inspiration

Magellan & Mariner Fires

inspiration: 1. stimulation of the mind or feelings to activity or creativity. 2. an inspired idea or action.



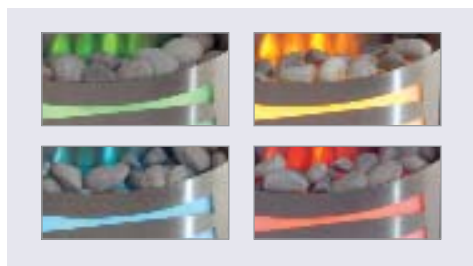
Magellan Fire



Mariner Fire



Both fire options
pebbles
marbles



Elara Suite Page 9.



Callisto Suite Page 4.

Ideas
Inspirational fires for the comfort of your home.

With a simple change of bulb, a choice of Flame-a-Vision effect colours can be incorporated, offering the potential to co-ordinate the fire with an interior design theme or change of season.

Creating inspirational fires for the comfort of your home.

Remote and manual on/off • Choice of five curved Flame-a-Vision colour effects
High-level switches • Thermostatically controlled 2kw heater concealed in canopy
Choice fuel effects either marbles or pebbles • Inset or freestanding spacer option
Ultra slim 65mm/2.5" inset • Dimensions on page 19.

Neptune & Apollo Fires

interior: 1. the inside of a building or room, with respect to design and decoration. 2. a picture of the inside of a room or building.

Neptune fire option
pebbles

Apollo fire option
marbles

Both fires are available in
brushed steel
& black



Elara Suite Page 4.

Callisto Suite Page 8.



Neptune



Flame-a-Vision colours:
White, Orange, Blue, Green
& Yellow.

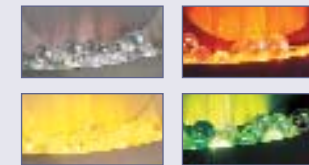
Remote and manual on/off • Choice of five curved Flame-a-Vision colour effects • High-level switches • Thermostatically controlled 2kw heater concealed in canopy • Choice fuel effects either marbles or pebbles • Inset or freestanding spacer option
Ultra slim 65mm/2.5" inset
Dimensions on page 18.

Patents Applied for. Designs registered 3012622, 3006217 & 3004950

tasteinterior



Apollo



Flame-a-Vision colours:
White, Orange, Blue, Green
& Yellow.

Manual on/off only • Choice of five Flame-a-Vision colour effects • High-level switches • Thermostatically controlled 2kw heater concealed in canopy • Marbles fuel effect only or coal fuel effect only • Inset or freestanding spacer option
Ultra slim 65mm/2.5" inset
Dimensions on page 18.

Patents Applied for. Designs registered 3012622, 3006217 & 3004950

serenity
warmth
serenity

Trinity & Berkeley Fires

serenity: 1. peaceful and tranquil; calm. 2. clear and bright.

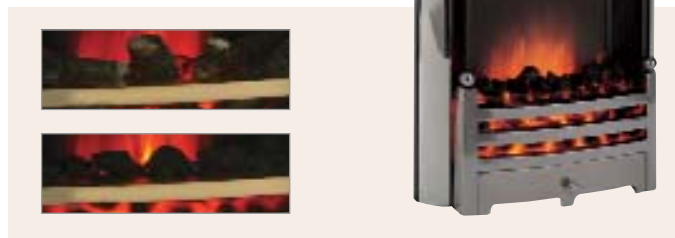
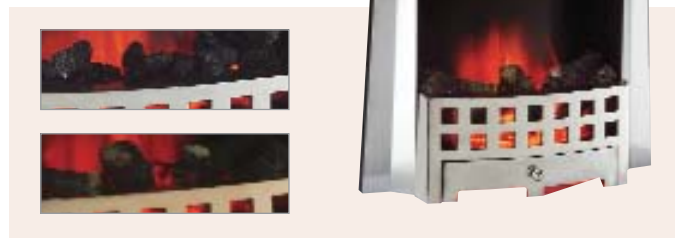
serenity



Trinity



Berkeley



Option
Both fire options
coals & logs
Both fires are available in
brushed steel
& brass
& black (not shown)

Trinity and Berkeley are available with Flame-a-vision real coal effect or Flame-a-vision log effect.

2kw heater concealed under canopy • Thermostatically controlled settings • High level switches • Inset or freestanding fire • Flame-a-Vision curved effect with real coal pieces and log effect • Chrome, Brass & Black • Ultra slim 65mm/2½" inset
Dimensions on page 19

Patents Applied for. Designs registered 300214 & 3009213

Stanford Harvard Utah *Fires*

calm: 1. still; a calm sea. 2. absence of disturbance or rough motion. 3. tranquil; serene.

Option
coals
logs
All fires are available in
brushed steel
brass
black



Stanford



Harvard



Utah



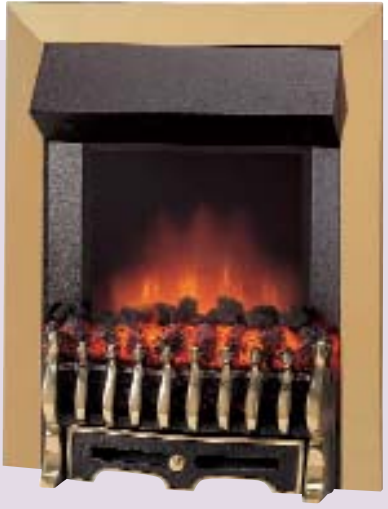
elements calm

The Stanford, Harvard and Utah are all available with Flame-a-Vision real coal effect or Flame-a-Vision log effect, introducing calm and natural elements, into your own home.

delight tradition
tradition

Brabazon Muirfield Atlanta Fires

traditional: 1. of, relating to, or
being a tradition.
traditional



Brabazon
Brabazon



Atlanta
Atlanta



Muirfield
Muirfield

Switches and 2Kw heater concealed in canopy
Two heat settings
Flame-a-Vision with real coal pieces
Inset fire only
Brass, Brushed Steel & Black (not shown) colour options



2kw heater
Two heat settings
Concealed switches
Inset fire only
Black & Brass colour options
Flame-a-Vision effect with realistic log pieces



2kw heater concealed in canopy
Two heat settings. Inset or freestanding
Flame-a-Vision effect with real coal pieces
Removable magnetic motif
Customisation frame and fret options
High-level switches

The Muirfield can be customised with a wide range of frets & frames, please opposite for all options.

Option Muirfield Options (only)



Bauhaus
Brass, chrome & black only.



Trinity
Brass, chrome & black only.



Blenheim
Black/chrome, black/brass & black only..



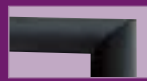
Denby
Black/chrome, black/brass & black only.



Curved & Angular, concave & convex



Brushed Steel



Black



Brass

Patent Applied for.

Woburn Turnberry & Wentworth

Suites

ideal: 1. tasteful, style, or design. 2. dignified and graceful. 3. cleverly simple.

ideal attraction
attraction



Woburn



Turnberry



Wentworth

Woburn is shown in Oak, (above) is also available with a mahogany effect finish (right).



Turnberry is shown in pine (above) or a mahogany effect finish. Cast iron effect inset with tube line tiles.



Wentworth is shown in white, (above), it is also available in an Oak (right) or Pine finish.

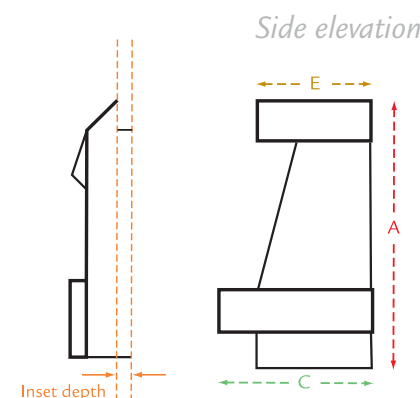
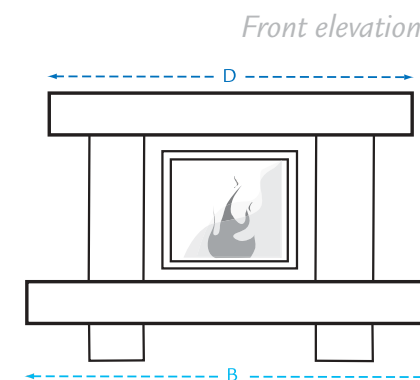


Switches and 2kw heater concealed in canopy • Two heat setting
Flame-a-Vision effect fire with real coal pieces
Dimensions on page 19.

All dimension given in millimetres and are to nearest 5mm. Please note: wood is a natural product and therefore colours and finishes may vary from those shown. *For specifications please follow the table below.*

Specifications Product

Fires	Overall			Inset			Fuel Effect	Remote	Heat Type	Colour	Free Standing	Flame Colour
	height	width	depth	height	width	depth						
Solar Flare	675	611	280	640	545	230	Pebbles/Driftwood*	Multi	1 & 2Kw Remote	Silver	N/A	N/A
Isis	590	605	280	560	545	230	Pebbles/Driftwood*	Multi	1 & 2Kw Remote	Silver	N/A	N/A
Odyssey	670	707	280	660	600	250	Pebbles	On/off	2Kw Therm	Silver	N/A	N/A
Magellan	610	570	180	560	390	065	Pebbles/Marbles*	On/off	2Kw Therm	Silver	✓*	✓
Mariner	610	495	180	560	390	065	Pebbles/Marbles*	On/off	2Kw Therm	Silver	✓*	✓
Neptune	610	495	180	560	390	065	Pebbles/Marbles*	On/off	2Kw Therm	Silver/Black	✓*	✓
Apollo	610	495	180	560	390	065	Coal	N/A	2Kw Therm	Silver/Black	✓*	N/A
Apollo Extreme	610	495	180	560	390	065	Marbles	N/A	2Kw Therm	Silver	✓*	✓
Apollo Eclipse	610	495	180	560	390	065	Marbles	N/A	2Kw Therm	Black	✓*	✓
Trinity	610	570	180	560	390	065	Coal/Log	N/A	2Kw Therm	Brass/Silver/Black	✓*	N/A
Berkeley	610	495	180	560	390	065	Coal/Log	N/A	2Kw Therm	Brass/Silver/Black	✓*	N/A
Stanford	610	495	180	560	390	065	Coal/Log	N/A	2Kw Therm	Brass/Silver/Black	✓*	N/A
Harvard	610	495	180	560	390	065	Coal/Log	N/A	2Kw Therm	Brass/Silver/Black	✓*	N/A
Utah	610	495	180	560	390	065	Coal/Log	N/A	2Kw Therm	Brass/Silver/Black	✓*	N/A
Brabazon	610	500	180	560	390	170	Coal	N/A	1 & 2Kw Manual	Silver/Black/Brass	N/A	N/A
Atlanta	565	630	235	520	600	215	Log	N/A	1 & 2Kw Manual	Brass/Black	N/A	N/A
Muirfield	610	495	180	560	390	065	Coal	N/A	1 & 2Kw Manual	Brass/Silver/Black	✓*	N/A
Suites	A	B	C	D	E		Fuel Effect	Remote	Heat Type	Colour	Free Standing	Flame Colour
Europa	1260	1270	340	1165	250		Pebbles/Driftwood*	Multi	1 & 2Kw Remote	Stone effect	✓	N/A
Neptune	965	1200	295	990	195		Pebbles/Marbles*	On/off	2Kw Therm	Stone effect	✓	✓
Odyssey	1095	1410	410	1365	325		Pebbles	On/off	2Kw Therm	Stone effect	✓	N/A
Odyssey Cabinet	805	965	205	-	-							
Callisto	1185	1320	310	1180	245		Pebbles/Marbles*	On/off	2Kw Therm	Stone effect	✓	✓
Callisto Cabinet	805	840	235	-	-							
Vega	1030	1150	350	1150	310		Pebbles/Driftwood*	Multi	1 & 2Kw Remote	Stone effect	✓	N/A
Apollo	1210	1160	255	1010	175		Marbles/Coal	N/A	2Kw Therm	Stone effect	✓	✓
Elara	1275	1200	370	1090	240		Pebbles/Marbles*	On/off	2Kw Therm	Maple	✓	✓
Manhattan	1055	1320	380	1350	290		Log	N/A	1 & 2Kw	Stone effect	✓	N/A
Princeton	1080	1285	380	1280	1295		Log	N/A	1 & 2Kw	Stone effect	✓	N/A
Woburn	805	990	270	940	214		Coal	N/A	1 & 2Kw Manual	Oak/Mahogany	✓	N/A
Turnberry	1070	1225	380	1197	260		Coal	N/A	1 & 2Kw Manual	Pine/Mahogany	✓	N/A
Wentworth	870	925	330	925	215		Coal	N/A	1 & 2Kw Manual	White/Pine/Mah/Oak	✓	N/A
Stoves	Overall			Inset			Fuel Effect	Remote	Heat Type	Colour	Free Standing	Flame Colour
Pioneer	910	545	375	N/A			Pebbles/Driftwood*	Multi	1 & 2Kw Remote	Silver & Black	✓	N/A
Voyager	1110	545	375	N/A			Pebbles/Driftwood*	Multi	1 & 2Kw Remote	Silver & Black	✓	N/A



* Cost option.

All products are protected by patents, registered design and intellectual property rights, Flamerite Fires Ltd, will protect these rights. Flamerite Fires Ltd reserves the right to modify or update its products or specifications without prior notice, as its policy is one of continual improvement.

Designed for living



Catalogue



® Award Winning Range 2003/4



a: **Head office**, Flamerite Fires Ltd, Unit 1C, Ringway Industrial Estate, Eastern Avenue, Lichfield, Staffordshire, WS13 7SF
Distribution, Flamerite Fires Ltd, Greenhough Road, Lichfield, Staffordshire, WS13 7AU

t: 01543 251 122

f: 01543 251 133

e: info@flameritefires.com

w: www.flameritefires.com

INNOVATION